
IMARKUP SOLUTIONS, INC.

iMarkup Server v6

Documentation Roadmap

Copyright 1998-2006 © iMarkup Solutions, Inc.
www.imarkup.com sales-info@imarkup.com
Phone (877) MARKUP1 • (760) 631-4560 • Fax (760) 631-0506
Last Revision 12/29/2006

Table of Contents

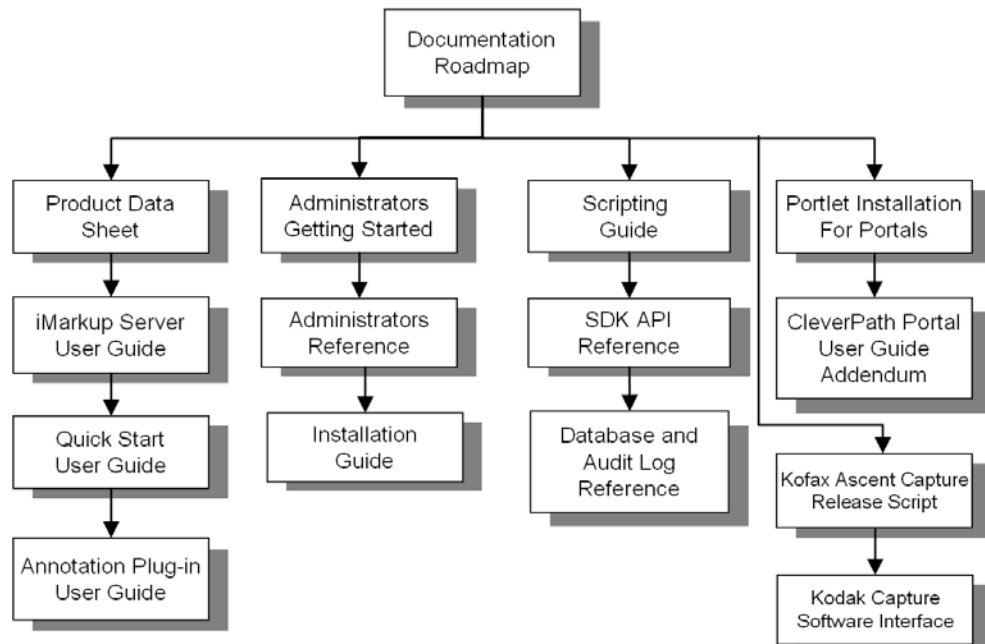
DOCUMENTATION ROADMAP	1
<i>Documentation Roadmap</i>	1
<i>Product Data Sheet</i>	1
<i>User Guide</i>	2
<i>Administrators Getting Started Guider</i>	2
<i>Administrators Reference Guide</i>	2
<i>Installation Guide</i>	2
<i>End User Quick Start</i>	2
<i>Annotation Plug-in User Guide</i>	2
<i>Scripting Guide</i>	2
<i>Database and Audit Log Reference</i>	3
<i>SDK API Reference</i>	3
<i>Kofax Ascent Capture Release Script</i>	3
<i>Kodak Capture Software Interface</i>	3
ONLINE HELP AND REFERENCE PAGES	4
CUSTOMIZATION OVERVIEW	4

The iMarkup Server product is an “out of the box” software solution. It also supports many customization options and contains various ways for integrating into existing web based applications (e.g. Portals). This document provides a *roadmap* of all the documents available for the iMarkup Server. Please refer to the iMarkup Solutions web site at <http://www.imarkup.com> for additional information.

Documentation Roadmap

This roadmap should be used to assist in choosing which documents are relevant to you. It is recommended that you start with the iMarkup Server Product Data Sheet to become familiar with the system and its capabilities. The documents available have different audiences. Some are for the system administrator and others are for the end-users.

The following documentation is available for the iMarkup Server v6:



Documentation Roadmap

You are now reading the **Documentation Roadmap**. This is used to assist in describing the various documents available for the iMarkup Server v6 product.

Product Data Sheet

The iMarkup Server v6 **Product Data Sheet** contains a general overview of the product. It describes the main components and highlights some of the many features.

User Guide

The iMarkup Server v6 **User Guide** is the document for users of the server. It covers the essential document management and usage features.

Administrators Getting Started Guider

The iMarkup Server v6 **Administrators Getting Started** is meant for the power users or administrators of the iMarkup Server. It walks you through the process of building a sample workflow definition, eForm definition and Knowledge View.

Administrators Reference Guide

The iMarkup Server v6 **Administrators Reference Guide** is meant for the power users or administrators of the iMarkup Server. It describes how to setup and configure the product and how to perform advanced functions and advanced customizations. It covers *best practices* and documents the various product components, including the managing of workflow definitions, Knowledge View definitions and electronic forms (eForms).

Installation Guide

The iMarkup Server v6 **Installation Guide** is used by the system administrator and IT to install the product. It covers the requirements and prerequisites for the server.

End User Quick Start

The iMarkup Server v6 **End User Quick Start** is intended to provide end-users with the essential information needed to respond to workflow requests (e.g. reviews, approvals, etc.), submit online forms, and start workflow processes.

Annotation Plug-in User Guide

The **Annotation Plug-in User Guide** contains information for *end-users* that are using the annotation functions with the iMarkup Server v6 or another server product via the iMarkup Java Annotation SDK.

Scripting Guide

The **Scripting Guide** provides the information needed to create custom eForm and workflow scripts. It also contains information on customizing the functions available to users. This is intended for users that require unique business logic or want to interact with external applications or databases in the workflow/eForms processing.

Database and Audit Log Reference

The **Database and Audit Log Reference** documents the table formats and fields used in the iMarkup Server and the CSV audit log format. The iMarkup Server uses a standard SQL database that is accessed via ODBC. This document is intended for users that want direct access to the iMarkup database or audit log for reporting or other external processing.

SDK API Reference

The **SDK API Reference** provides a detailed reference guide for the SOAP/COM API's, the client plugin script interfaces, programming interfaces and return codes. This is intended for companies that are integrating the iMarkup Server with another application (e.g. authentication).

Kofax Ascent Capture Release Script

The **Kofax Ascent Capture Release Script** documents the installation and configuration of the Kofax scanning interface in to the iMarkup Server product.

Kodak Capture Software Interface

The **Kodak Capture Software Interface** document covers the installation and configuration of the Kodak scanning interface in to the iMarkup Server product.

Online Help and Reference Pages

The **Online Help and Reference Pages** contain information surrounding advanced usage, configuration, system settings and diagnostic information.

iMarkup Server Online Help: <http://imarkup.com/help/workgroup/>

iMarkup Client Online Help: <http://imarkup.com/help/imarkup/>

Customization Overview

The iMarkup Server product is a standalone product that provides complete functionality right “out of the box”. Its features can be assessed and demonstrated with very little effort. However, when the iMarkup Server is deployed in a production environment, it provides an easy way to blend the iMarkup Server capabilities into your current environment. Simple mechanisms allow seamless integration with existing web-based applications.

Integration capabilities are provided for:

- ❖ Custom business logic in your eForms/workflow processing;
- ❖ User interface and the functions available to different groups of users;
- ❖ Login/authentication systems;
- ❖ Administrative control of iMarkup Server data and processing;
- ❖ Control of the iMarkup annotation plug-in interface;

Every customer can choose the level of customization they wish to achieve. All of the features are straight forward and easy to implement. The customization process can be accomplished in incremental steps and can be extended as more experience is gained. All customization work will be compatible with future upgrades to the iMarkup Server.